



STATE OF HAWAII
DEPARTMENT OF LAND AND NATURAL RESOURCES
ALA WAI CANAL DREDGING AND IMPROVEMENTS
Public Information



September 2019

The State Department of Land and Natural Resources (DLNR) proposes to commence dredging operations and wall repair in August/September 2019. This project involves dredging of the Ala Wai Canal to remove accumulated silt and sediments, and repairing two sections of walls along the canal.

The dredging depths varies between -12.0' and -6.0' mean lower low water, and the estimated total volume of dredging work and material is 186,000 cubic yards. This dredged material is suitable for ocean disposal at an EPA South Oahu Ocean Dredged Material Disposal Site. The walls being repaired include the Mauka side fronting the Ala Wai Community Park and between the Kalakaua Avenue and McCully Street bridges.

The work hours and impacts are expected to be same as the last time DLNR dredged the canal back in 2002. The work hours are from 7 am-10 pm Monday-Saturday, and 9 am-10 pm Sundays and Holidays. There will be temporary construction impacts including constraints to water recreation, sporadic walkway closures, and minor noise. The overall duration of the project is expected to be approximately one year.

The long-term benefits of this project include maintaining the ability of the canal to efficiently convey storm water flows to the ocean to reduce the risk of flooding, and improving the aesthetics and use of the canal for recreational users.

Project information including plans and tentative schedule can be found on DLNR Engineering Division website, <http://dlnreng.hawaii.gov/projects/ala-wai-canal-dredging/>

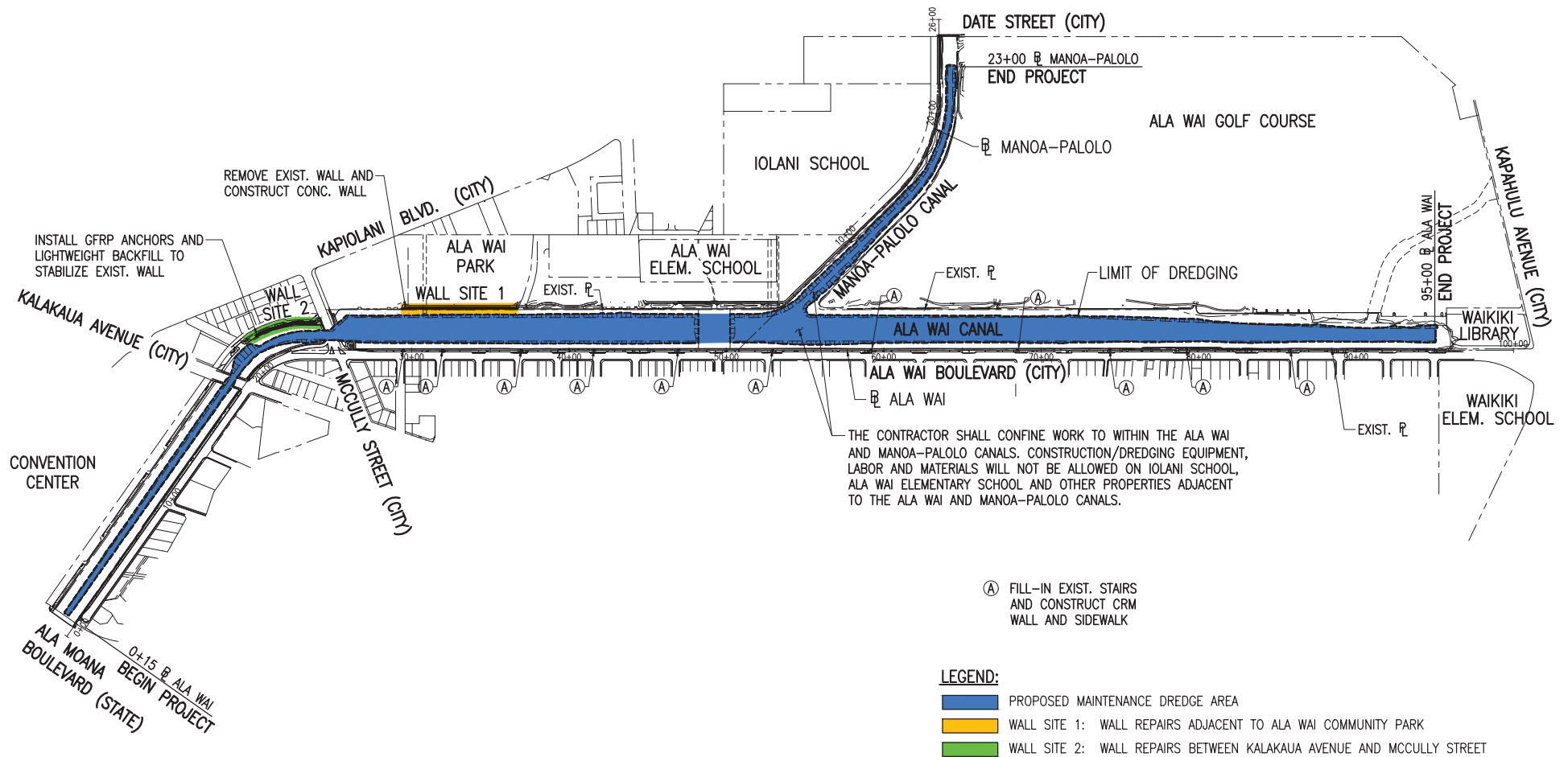
Contractor:

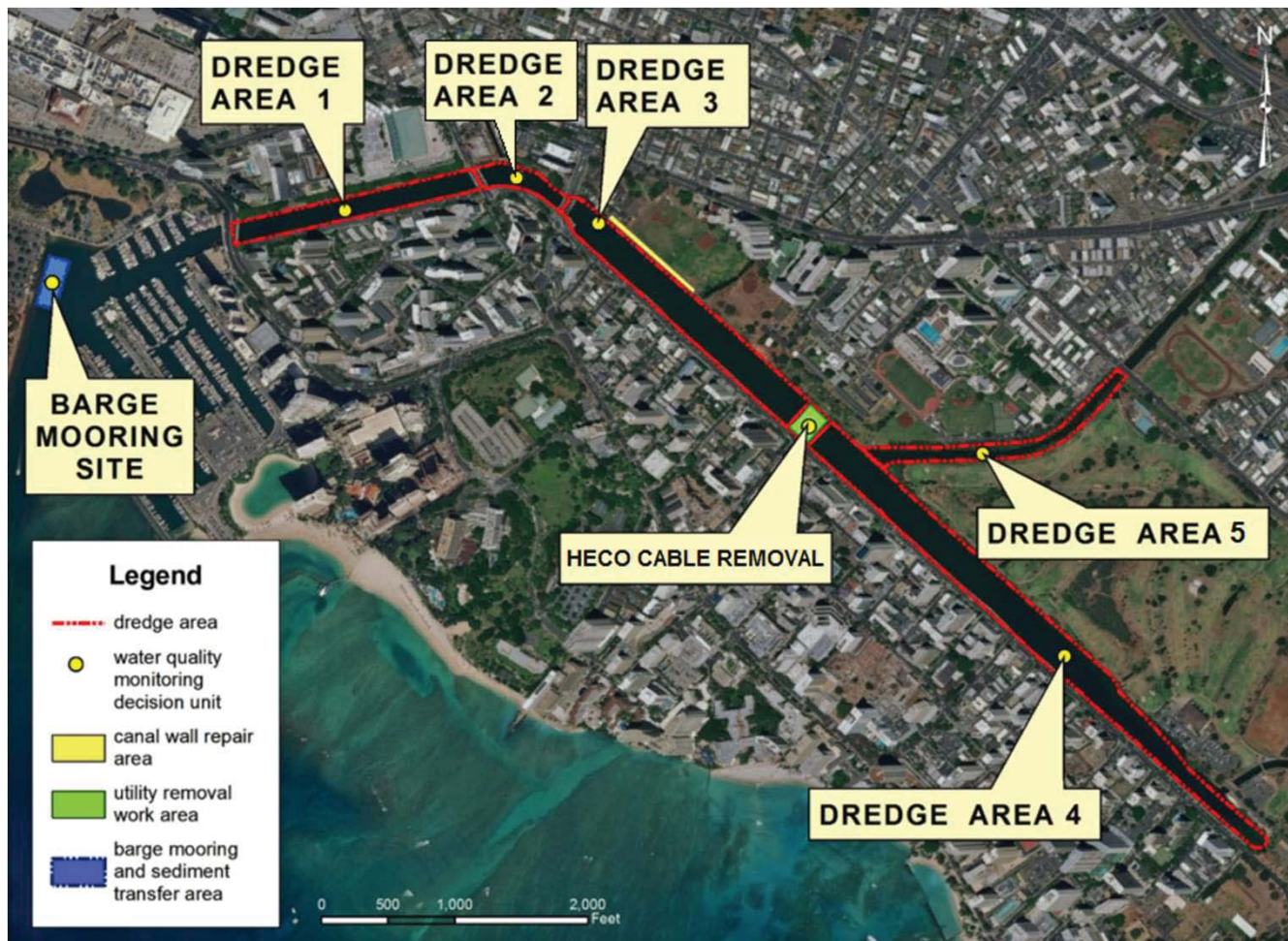
Hawaii Harbors Constructors JV

Contact information during construction:

Dickey Lee
Engineering Division
Department of Land and Natural Resources
1151 Punchbowl Street, Room 221
Honolulu, Hawaii 96813
Phone: 808-587-0280
e-mail: dlnr.engr@hawaii.gov







Dredge Area 1 – Ala Moana Blvd
 Bridge - Kalakaua Av. Bridge
 Duration: 10-15 days

Dredge Area 2 – Kalakaua Av
 Bridge – McCully Bridge
 Duration: 10-15 days

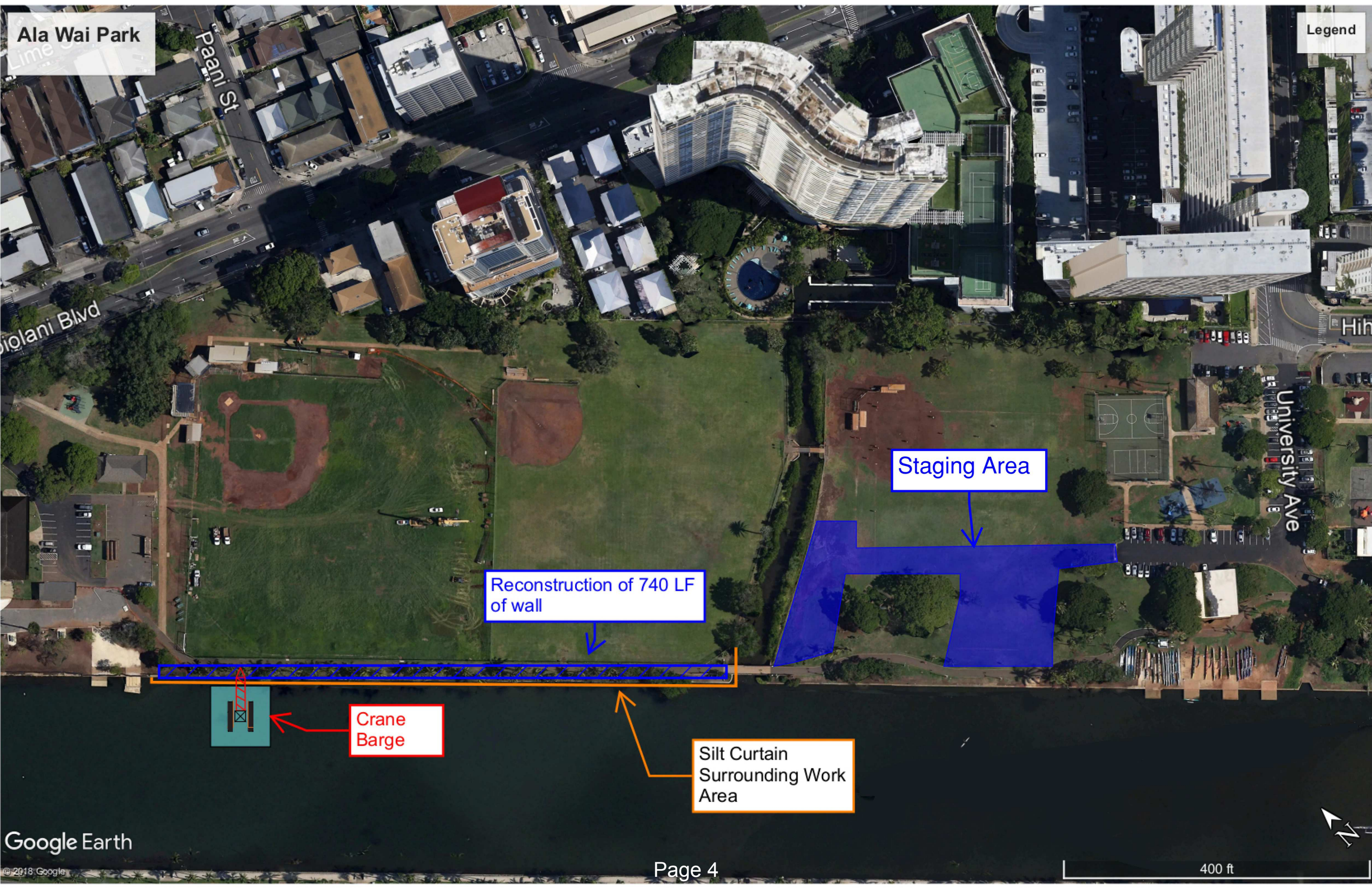
Dredge Area 3 – McCully Bridge –
HECO Easement
 Duration: 55-65 days

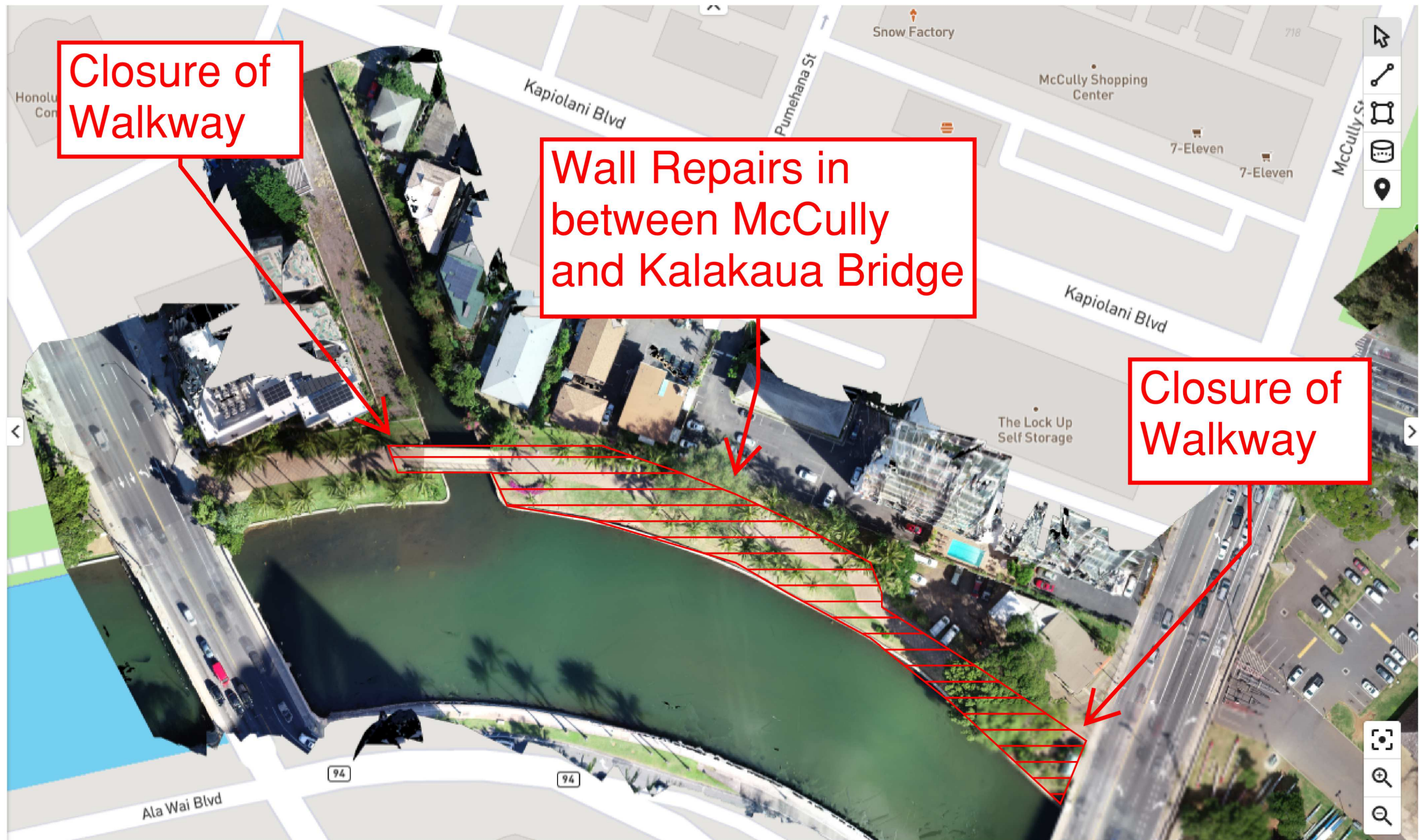
Dredge Area 4 – HECO Easement
– Ainakea Way
 Duration: 50-65 days

Dredge Area 5 – Manoa Palolo
Drainage Canal
 Duration: 15-20 days

 **HAWAII HARBORS CONSTRUCTORS JV**

18_923_dredge_phases







HAWAII HARBORS CONSTRUCTORS JV

**ALA WAI CANAL DREDGING
AND IMPROVEMENTS**



HEALY TIBBITTS
BUILDERS, INC.

DREDGING



HAWAIIAN DREDGING
CONSTRUCTION COMPANY, INC.

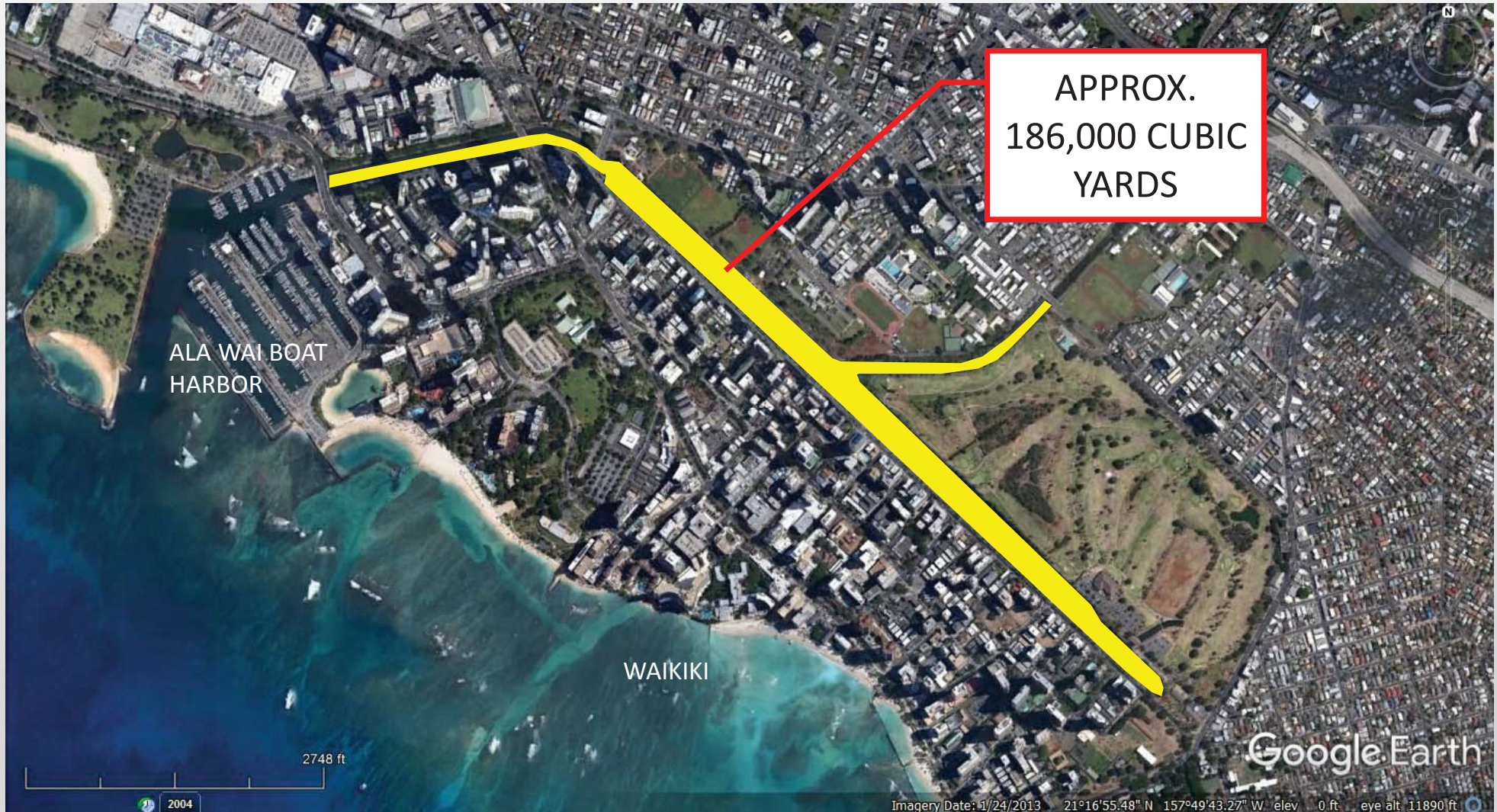
SEAWALL
IMPROVEMENTS



HAWAII HARBORS CONSTRUCTORS JV

HAWAII HARBORS CONSTRUCTORS JV

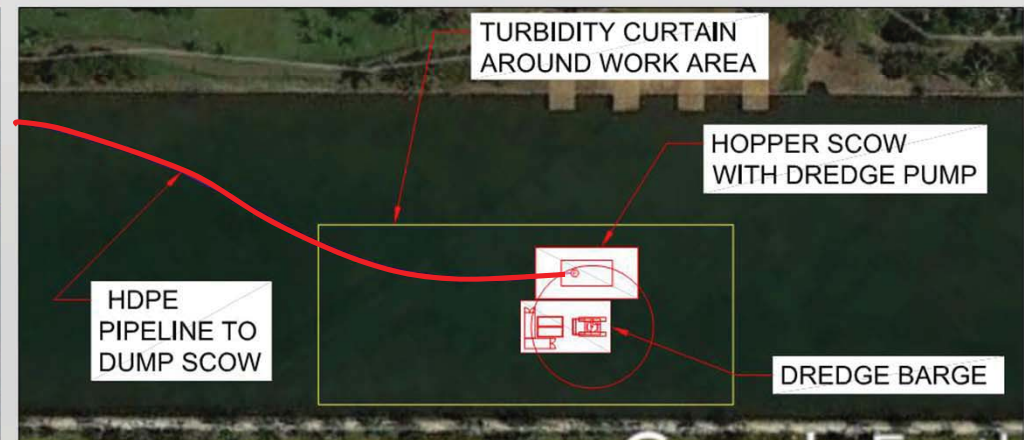
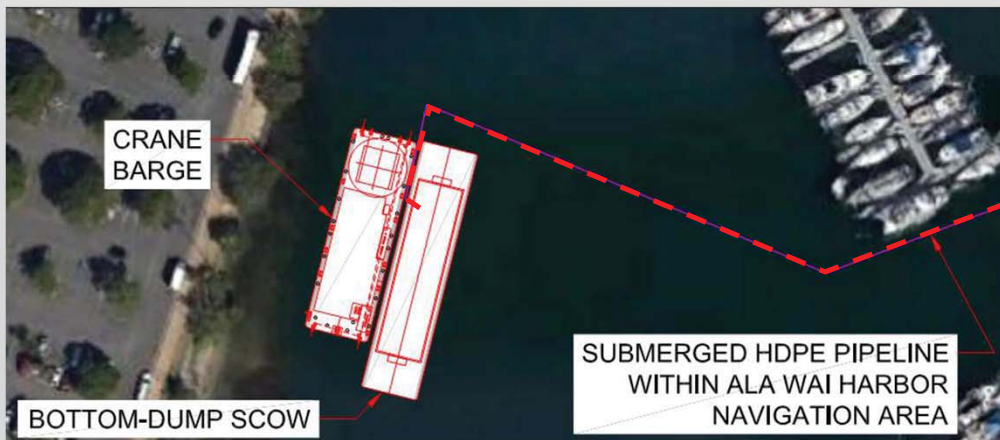
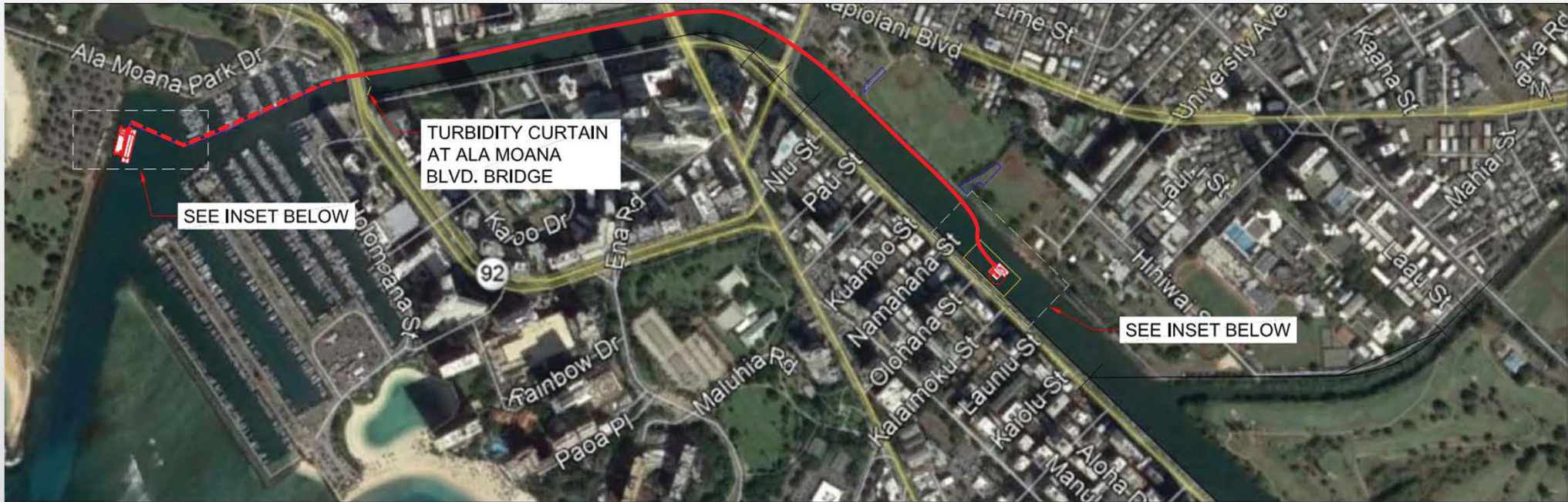
ALA WAI CANAL DREDGING AND IMPROVEMENTS



DREDGING LIMIT MAP



ALA WAI CANAL DREDGING AND IMPROVEMENTS



DREDGING OPERATION



ALA WAI CANAL DREDGING AND IMPROVEMENTS

MAJOR EQUIPMENT:

- HT 538 CRANE BARGE
- WEEKS 260 2,000 CY DUMP SCOW
- CAT 375 EXCAVATOR WITH CLAMSHELL BUCKET
- WEEKS 403 TUG CAROLYN
- WEEKS 429 TUG ROBERTA G
- WEEKS 453 PUSH BOAT DON CARLOS

HAWAII HARBORS CONSTRUCTORS JV

ALA WAI CANAL DREDGING AND IMPROVEMENTS



HEALY TIBBITTS BUILDERS, INC.

A Weeks Marine Company

Marine Contractors
Dredging - Equipment Rentals
Marine Transportation - Heavy Lifts
Deep Foundations - Offshore Pipelines

HAWAII OFFICE: 99-994 Iwaena Street, Suite A, Alea, Hawaii 96701, Phone: (808)487-3664, Fax: (808)487-3660



HT 538 - CRANE BARGE

Hull: 160'L x 50.5'W x 12.4'D
Gross Tonnage: 912
COD Official Number: 527059
Winches: 1 each 4-Drum Mooring
Boom Length: 126'-11" (Heel Pin to Main Sheaves)
Manufacturer: Washington Iron Works
Model: 28H-120-BA
Lifting Capacity: 45 short tons @ 45' radius
Crane Draw-Works: 3-Drum Manitowoc 390E Hoist

538 Infosheet 1-2016.pdf

Rev 1/2016

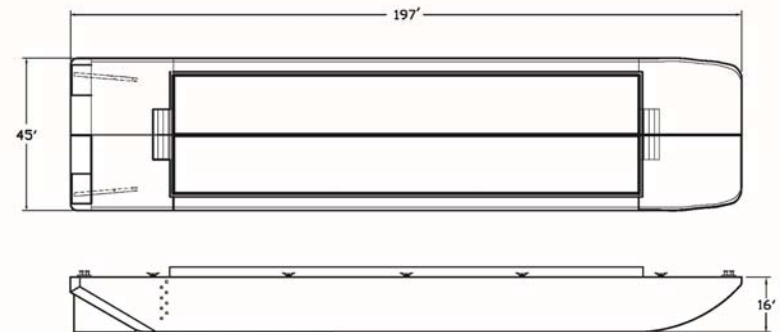


HEALY TIBBITTS BUILDERS, INC.

A Weeks Marine Company

Marine Contractor
Dredging - Equipment Rentals
Marine Transportation - Heavy Lifts
Deep Foundations - Offshore Pipelines

HAWAII OFFICE: 99-994 Iwaena Street, Suite A, Alea, Hawaii 96701, Phone: (808)487-3664, Fax: (808)487-3660



WEEKS 260 - SPLIT HULL SCOW

Hull: 197'L x 45'W x 16'D
Gross Tonnage: 1,093 short tons
COD Official Number: WEEKS 260: 967328
Hopper Capacity: 2,000 Cubic Yards
Design Draft: 14'

260Infosheet 4-2019.pdf

Rev 4/2019

HAWAII HARBORS CONSTRUCTORS JV

ALA WAI CANAL DREDGING AND IMPROVEMENTS



HEALY TIBBITTS BUILDERS, INC.

A Weeks Marine Company

Marine Contractors
Dredging - Equipment Rentals
Marine Transportation - Heavy Lifts
Deep Foundations - Offshore Pipelines

HAWAII OFFICE: 99-994 Iwaena Street, Suite A, Aiea, Hawaii 96701, Phone: (808)487-3664, Fax: (808)487-3660



CAT 375 - EXCAVATOR WITH CLAMSHELL BUCKET

Engine Model:	Cat 3406C Turbocharged ATAAC
Gross Power:	428hp
Fuel Capacity:	261 gallons
Operating Weight:	173,100 LBS
Width of Outside Tracks:	11.5 ft
Height, Top of Cab:	12.0 ft
Ground Clearance:	3.0 ft
Tail Swing Radius:	13.8 ft radius
Length of Track on Ground:	15.1 ft

CAT375wClamshell Infosheet 4-2019.pdf

Rev 4/2019



Dredging - Marine Contractors
Stevedoring - Equipment Rentals
Towing - Heavy Lift - Salvage

Marine Services Division: 4 Commerce Drive, Cranford, NJ 07016-3598 (908) 272-4010 FAX: (908) 272-4740



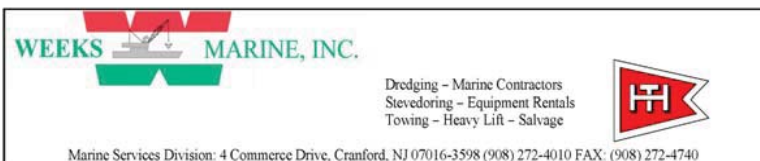
Carolyn - Member AWO RESPONSIBLE CARRIER PROGRAM

Year Built:	1968
Length:	59'
Beam:	22'
Vertical Clearance:	39' 04"
Max Draft:	8.5'
Height of Eye:	Pilothouse - 18' Flying Bridge- 24'
Main Propulsion:	(2 ea.) CAT 3406; 400 HP each (repowered 2012)
Reduction Gears:	Twin Disc MG-514C ; 6.0:1 Ratio
Propellers:	2 - 66" diam x 44"
Max Speed:	9.5 Knots
Cruising Speed:	7.5 Knots
Fuel Capacity:	15000gal
Potable Water Capacity:	2000gal
Lube Oil Capacity:	242gal
Electronics:	2 Furuno Radars, 4 VHF's, 1 GPS, AIS, 1 Loud hailer, 1 Cellular phone
Towing Winch:	Smatco Single Drum, 900' of 1.125" diameter wire Powered by GM471
Bollard Pull:	8.7 Tons Estimated
Tonnage:	98 GRT
Call Letters:	WY 2931
Official Number:	512707
Berths:	4

Rev 9/13

HAWAII HARBORS CONSTRUCTORS JV

ALA WAI CANAL DREDGING AND IMPROVEMENTS



Roberta G - Member AWO RESPONSIBLE CARRIER PROGRAM

Year Built:	1969
Length:	45.7'
Beam:	15.4'
Vertical Clearance	23.0'
Max Draft:	6.5'
Height of Eye:	Pilothouse - 9' Flying Bridge- 17'
Main Propulsion:	(2 ea.) John Deere 6081 AFM75; 300 HP ea.
Reduction Gears:	Twin Disc MG5091
Propellers:	2 - 50" diam x 36"
Max Speed:	9.5 Knots
Cruising Speed:	8.0 Knots
Fuel Capacity:	2500gal
Potable Water Capacity:	100gal
Lube Oil Capacity:	130gal
Electronics:	1 Furuno Radar, 3 VHF's, 1 GPS, 1 Cellular phone
Towing Winch:	N/A
Bollard Pull:	N/A
Tonnage:	28 GRT
Call Letters:	WDF 7744
Official Number:	523460
Berths:	1

Rev 9/10/13

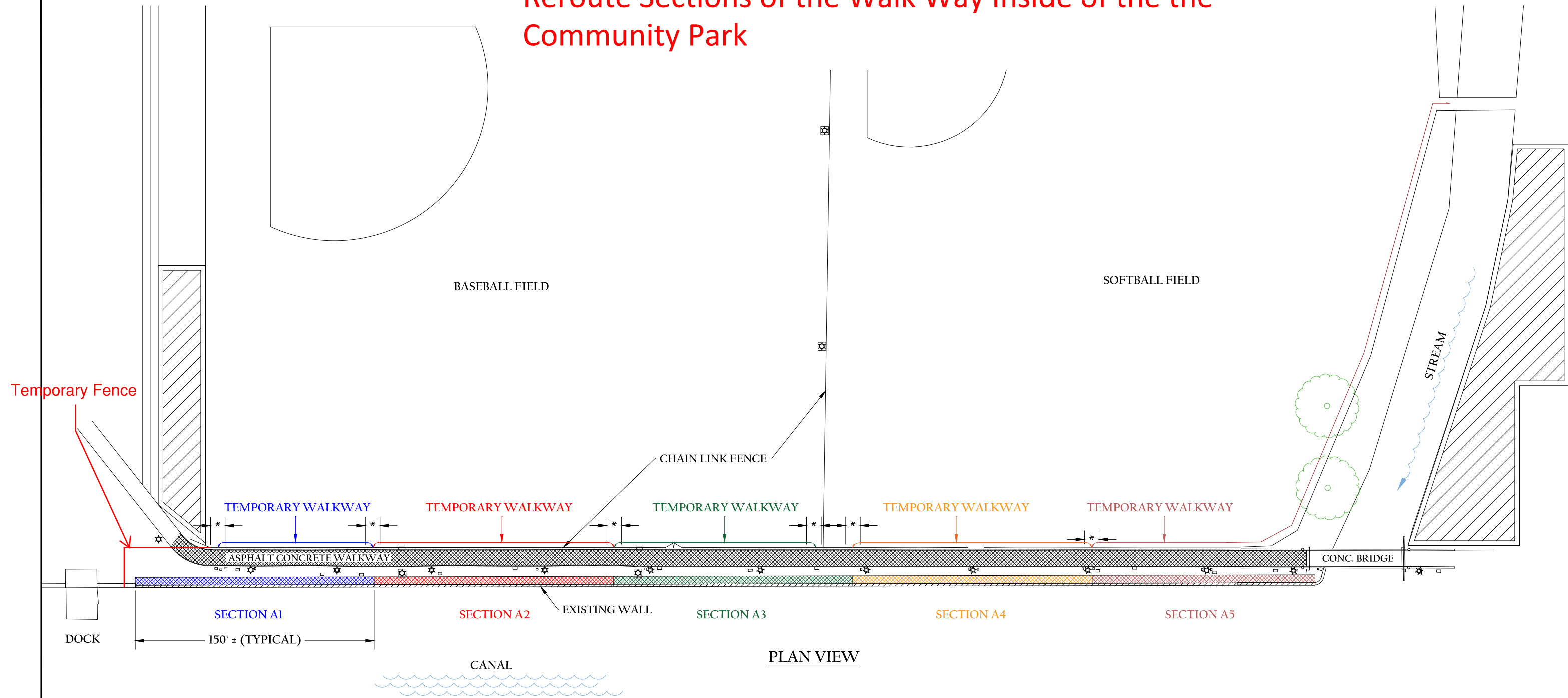


Don Carlos - Member AWO RESPONSIBLE CARRIER PROGRAM

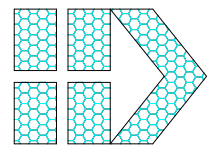
Year Built:	1982
Length:	40.2'
Beam:	20.1'
Vertical Clearance	21.6'
Max Draft:	4.25'
Height of Eye:	Pilothouse - 8.0' Flying Bridge- 20.0'
Main Propulsion:	Twice CAT 3208; 500HP combined
Reduction Gears:	Twin Disc 509; 2.95:1
Propellers:	2 - 36" x 34
Max Speed:	8.5 Knots
Cruising Speed:	6.5 Knots
Fuel Capacity:	536gal
Potable Water Capacity:	N/A
Lube Oil Capacity:	N/A
Electronics:	1 VHF 1 Cellular phone
Towing Winch:	N/A
Bollard Pull:	N/A
Tonnage:	22 GRT
Call Letters:	WCT8969
Official Number:	649392
Berths:	0

Rev 9/11/09

Reroute Sections of the Walk Way Inside of the the Community Park



* OPENING IN CHAIN LINK FENCE



**HAWAIIAN DREDGING
CONSTRUCTION COMPANY, INC.**

ALA WAI CANAL DREDGING AND IMPROVEMENTS
RETAINING WALL A , WALKWAY RELOCATION PLAN
PLAN VIEW

DATE : MARCH 11, 2019
PROJECT : ALA WAI
DRAWN BY : SKY MIYAMOTO
FILE : WALKWAY RELOCATION OVERALL III