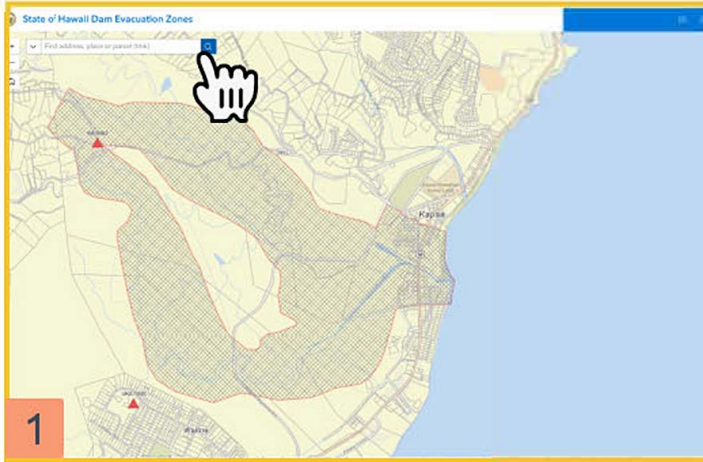


Do I live in a Dam Evacuation Zone?

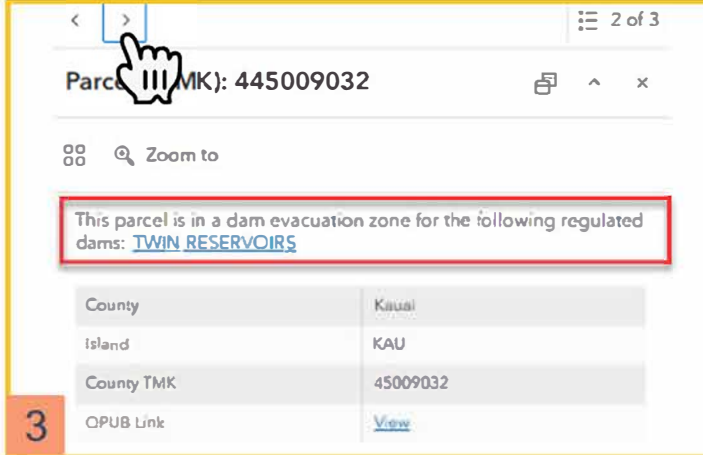
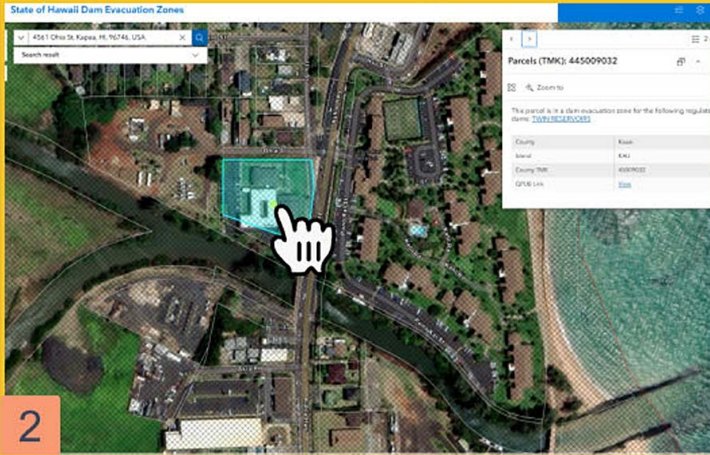
dams.hawaii.gov



1 Search by zooming to an area of interest, entering a TMK or property address.

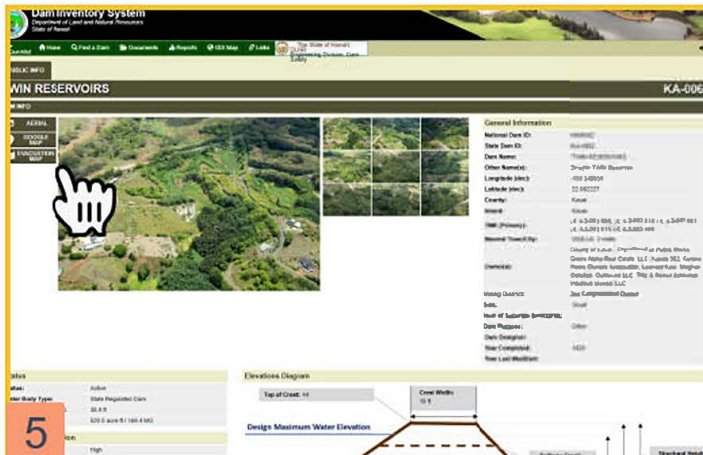
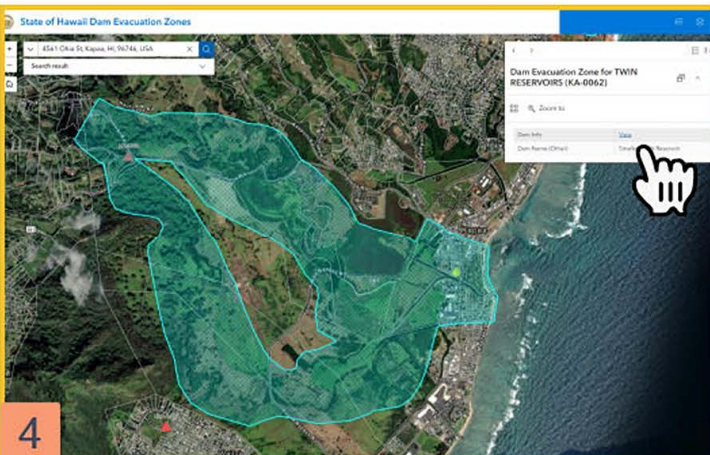
2 After clicking on an area of interest, a pop-up window will open that provides point information derived from various data sources.

3 A note will appear in the pop-up indicating if parcel is located within a state regulated dam's evacuation zone. Click on arrows in top left to navigate to evacuation zone.



4 The dam evacuation areas will be highlighted on the map. Dam specific information can be found by clicking on "view" link.

5 Users will be redirected to the DLNR Dam Inventory System website.



The data provided on the dam evacuation zone map viewer is subject to continual updating. Hawaii Department of Land and Natural Resources (DLNR) does not guarantee the accuracy, completeness, timeliness, or correct sequencing of the data and information provided in this web site. Read full disclaimer on the map viewer.

